

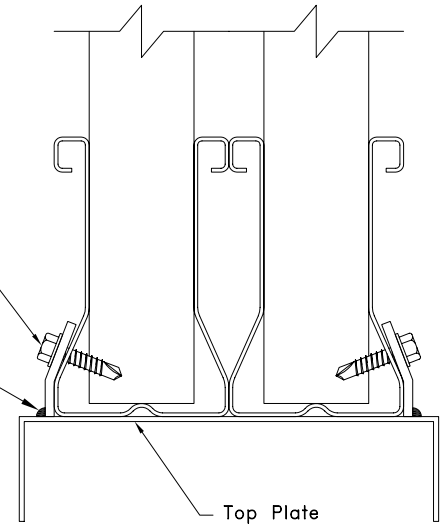
Clip A with (6)  
#14SDS (TYP.) each  
face (outside face)

E70XX (TYP.)  $\frac{1}{8}'' \nabla 5''$

(1) TS1WTC5 Clips  
each Panel Point

14ga Minimum Top  
Plate. Bare metal  
thickness,  $t = 0.0677''$

$\frac{1}{8}'' \nabla 5''$  E70XX (TYP.)



Top Plate

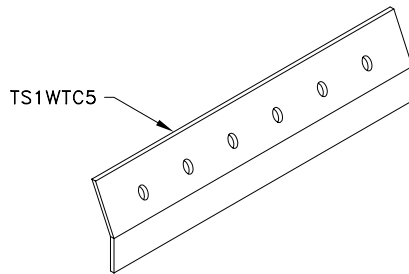
### Max Allowable Reaction Combinations

U = 6700 with P1 = 2490

U = 1280 with P1 = 6070

#### General Notes:

1. SDS = Self-Drilling Tapping Screw
2. End distance, Edge distance and Screw Spacing is  $\frac{3}{4}''$  minimum.
3. Wall top plate is made of ASTM A653-06a SS grade 33 or grade 50 steel. Top plate width is 6" maximum.
4. Attachment of second clip on opposite face of chord is identical to what is detailed.
5. Truss may be single ply.
6. Connection of top plate to wall stud must be capable of transferring truss uplift load from wall top plate to wall stud.
7. The wall top plate is to be designed by the job engineer. The wall top plate must be designed to support the loads applied to it (downward, upward and lateral).
8. Refer to TrusSteel Technical Bulletin 98.10.05 titled "Repair of Galvanized Surfaces" to restore corrosion resistant properties of the connection after welding.
9. Cold-Formed Steel Calculations are per the 2004 addendum to the AISI 2001 North American Specification for the design of Cold-Formed Steel Structural Members.



TS1WTC5 is 10g - base metal thickness ( $t$ ) = 0.128 in. (3.25mm)

**TrusSteel®**  
An ITW Company

[www.TrusSteel.com](http://www.TrusSteel.com)

Florida: 1950 Marley Drive / Haines City, FL 33844 / (800) 755-6001  
Missouri: 13389 Lakefront Drive / Earth City, MO 63045 / (800) 326-4102  
California: 8351 Rovana Circle / Sacramento, CA 95828 / (800) 877-3678

**10ga Clip Welded to 14ga  
Cold Formed Steel Bearing**

ITW Building Components Group, Inc. shall not be responsible for any performance failure in a connection due to a deviation from this detail. Any variation from this detail shall be approved in advance by ITW Building Components Group, Inc.

#### Custom Detail:

TS-CD-TB-CF15-001

Date:

02/13/09

#### Custom Detail:

Truss-to-Bearing: Cold-Formed Steel